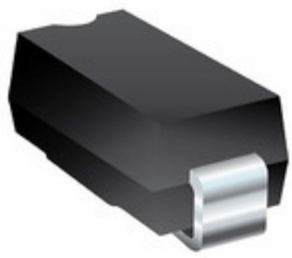


## SMBJ26CA-Q



**BOURNS®**

**Part Number:** [SMBJ26CA-Q](#)

**Manufacturer:** [Bourns, Inc.](#)

**Description:** TVS DIODE 26V 42.1V SMB

**Data sheet:** [SMBJ-Q Series Datasheet](#)

**RoHS Status:** Lead free / RoHS Compliant

**Ship From:** Hong Kong

**Shipment Way:** DHL/Fedex/TNT/UPS/EMS

Images are for reference only.  
See Product Specifications for product details.  
Buy SMBJ26CA-Q with confidence from Component-World.HK, 1 Year Warranty

[Request For Quotation](#)

### PRODUCT PARAMETER

<b>Part Number</b>	SMBJ26CA-Q	<b>Manufacturer</b>	<a href="#">Bourns, Inc.</a>
<b>Description</b>	TVS DIODE 26V 42.1V SMB	<b>Lead Free Status / RoHS Status</b>	Lead free / RoHS Compliant
<b>Quantity Available</b>	456929 pcs	<b>Data sheet</b>	<a href="#">SMBJ-Q Series Datasheet</a>
<b>Category</b>	<a href="#">Circuit Protection</a>	<b>Voltage - Reverse Standoff (Typ)</b>	26V
<b>Voltage - Clamping (Max) @ Ipp</b>	42.1V	<b>Voltage - Breakdown (Min)</b>	28.9V
<b>Type</b>	Zener	<b>Supplier Device Package</b>	SMB (DO-214AA)
<b>Series</b>	Automotive, AEC-Q101, SMBJ	<b>Power Line Protection</b>	No
<b>Power - Peak Pulse</b>	600W	<b>Packaging</b>	Tape & Reel (TR)
<b>Package / Case</b>	DO-214AA, SMB	<b>Other Names</b>	SMBJ26CA-QTR
<b>Operating Temperature</b>	-55°C ~ 150°C (TJ)	<b>Mounting Type</b>	Surface Mount
<b>Moisture Sensitivity Level (MSL)</b>	1 (Unlimited)	<b>Manufacturer Standard Lead Time</b>	16 Weeks
<b>Lead Free Status / RoHS Status</b>	Lead free / RoHS Compliant	<b>Current - Peak Pulse (10/1000µs)</b>	14.3A
<b>Capacitance @ Frequency</b>	-	<b>Bidirectional Channels</b>	1
<b>Applications</b>	Automotive		

Component-World.com is a Reliable Stocking Distributor of Electronic Components. We specialize in all Bourns, Inc. series electronic components. We have 456929 pieces of Bourns, Inc. SMBJ26CA-Q in stock available now. Request a quote from electronics components distributor at Component-World.com, our sales team will contact you within 24 hours.  
RFQ Email: [info@Components-World.com](mailto:info@Components-World.com)

### RELATED PRODUCTS

	<b>Part#:</b> <a href="#">SMBJ26CA-13-F</a> <b>Description:</b> TVS DIODE 26V 42.1V SMB	<b>Manufacturers:</b> <a href="#">Diodes Incorporated</a>	<a href="#">RFQ</a>
	<b>Part#:</b> <a href="#">SMBJ26CA-TP</a> <b>Description:</b> TVS DIODE 26V 42.1V DO214AA	<b>Manufacturers:</b> <a href="#">Micro Commercial Components (MCC)</a>	<a href="#">RFQ</a>
	<b>Part#:</b> <a href="#">SMBJ26CA-HR</a> <b>Description:</b> TVS DIODE 26V 42.1V DO214AA	<b>Manufacturers:</b> <a href="#">Hamlin / Littelfuse</a>	<a href="#">RFQ</a>
	<b>Part#:</b> <a href="#">SMBJ26CA-QH</a> <b>Description:</b> TVS DIODE 26V 42.1V SMB	<b>Manufacturers:</b> <a href="#">Bourns, Inc.</a>	<a href="#">RFQ</a>
	<b>Part#:</b> <a href="#">SMBJ26CA-M3/5B</a> <b>Description:</b> TVS DIODE 26V 42.1V DO214AA	<b>Manufacturers:</b> <a href="#">Electro-Films (EFI) / Vishay</a>	<a href="#">RFQ</a>
	<b>Part#:</b> <a href="#">SMBJ26CA-E3/52</a> <b>Description:</b> TVS DIODE 26V 42.1V DO214AA	<b>Manufacturers:</b> <a href="#">Electro-Films (EFI) / Vishay</a>	<a href="#">RFQ</a>
	<b>Part#:</b> <a href="#">SMBJ26CAHE3/5B</a> <b>Description:</b> TVS DIODE 26V 42.1V DO214AA	<b>Manufacturers:</b> <a href="#">Electro-Films (EFI) / Vishay</a>	<a href="#">RFQ</a>
	<b>Part#:</b> <a href="#">SMBJ26CD-M3/H</a> <b>Description:</b> TVS DIODE 26V 41.6V DO214AA	<b>Manufacturers:</b> <a href="#">Electro-Films (EFI) / Vishay</a>	<a href="#">RFQ</a>
	<b>Part#:</b> <a href="#">SMBJ26CA R5G</a> <b>Description:</b> TVS DIODE 26V 42.1V DO214AA	<b>Manufacturers:</b> <a href="#">TSC (Taiwan Semiconductor)</a>	<a href="#">RFQ</a>
	<b>Part#:</b> <a href="#">SMBJ26CAE3/TR13</a> <b>Description:</b> TVS DIODE 26VWM 42.1VC SMBJ	<b>Manufacturers:</b> <a href="#">Microsemi Corporation</a>	<a href="#">RFQ</a>
	<b>Part#:</b> <a href="#">SMBJ26CA-TR</a> <b>Description:</b> TVS DIODE 26V 53.5V SMB	<b>Manufacturers:</b> <a href="#">STMicroelectronics</a>	<a href="#">RFQ</a>
	<b>Part#:</b> <a href="#">SMBJ26CA-M3/52</a> <b>Description:</b> TVS DIODE 26V 42.1V DO214AA	<b>Manufacturers:</b> <a href="#">Electro-Films (EFI) / Vishay</a>	<a href="#">RFQ</a>
	<b>Part#:</b> <a href="#">SMBJ26CA-E3/5B</a> <b>Description:</b> TVS DIODE 26V 42.1V DO214AA	<b>Manufacturers:</b> <a href="#">Electro-Films (EFI) / Vishay</a>	<a href="#">RFQ</a>
	<b>Part#:</b> <a href="#">SMBJ26CA-13</a> <b>Description:</b> TVS DIODE 26V 42.1V SMB	<b>Manufacturers:</b> <a href="#">Diodes Incorporated</a>	<a href="#">RFQ</a>
	<b>Part#:</b> <a href="#">SMBJ26CA M4G</a> <b>Description:</b> TVS DIODE 26V 42.1V DO214AA	<b>Manufacturers:</b> <a href="#">TSC (Taiwan Semiconductor)</a>	<a href="#">RFQ</a>
	<b>Part#:</b> <a href="#">SMBJ26CATR</a> <b>Description:</b> TVS DIODE 26V 42.1V SMB	<b>Manufacturers:</b> <a href="#">Sensitron Semiconductor / SMC Diode Solutions</a>	<a href="#">RFQ</a>
	<b>Part#:</b> <a href="#">SMBJ26CAHE3/52</a> <b>Description:</b> TVS DIODE 26V 42.1V DO214AA	<b>Manufacturers:</b> <a href="#">Electro-Films (EFI) / Vishay</a>	<a href="#">RFQ</a>
	<b>Part#:</b> <a href="#">SMBJ26CAHM4G</a> <b>Description:</b> TVS DIODE 26V 42.1V DO214AA	<b>Manufacturers:</b> <a href="#">TSC (Taiwan Semiconductor)</a>	<a href="#">RFQ</a>
	<b>Part#:</b> <a href="#">SMBJ26CAHR5G</a> <b>Description:</b> TVS DIODE 26V 42.1V DO214AA	<b>Manufacturers:</b> <a href="#">TSC (Taiwan Semiconductor)</a>	<a href="#">RFQ</a>
	<b>Part#:</b> <a href="#">SMBJ26CA-HRA</a> <b>Description:</b> TVS DIODE 26V 42.1V DO214AA	<b>Manufacturers:</b> <a href="#">Hamlin / Littelfuse</a>	<a href="#">RFQ</a>

### Related keywords for SMBJ26CA-Q

Bourns, Inc. SMBJ26CA-Q	SMBJ26CA-Q distributor	SMBJ26CA-Q supplier	SMBJ26CA-Q price
SMBJ26CA-Q download datasheet	SMBJ26CA-Q datasheet	SMBJ26CA-Q stock	buy SMBJ26CA-Q
Bourns, Inc. SMBJ26CA-Q	Bourns Inc. SMBJ26CA-Q	J.W. Miller / Bourns SMBJ26CA-Q	